

UPDATING THE ESTUARY MANAGEMENT PLAN FOR YAQUINA BAY

TOWN HALL PRESENTATION

JULY 2023





Overview

1. Background and Timelines
2. Who Was Involved
3. Update Process
4. Proposed Revisions the Plan
5. Q&A Session


WEBSITE

www.yaquina-emp.org

Yaquina Bay Estuary Management Plan Update

[The Plan](#) [The Estuary](#) [The Process](#)

[Get Involved](#)



The Draft Plan Update is now open for public input.

UPDATED ESTUARY MANAGEMENT PLAN

A [Needs and Gaps Assessment](#) was developed to determine how the current Estuary Management Plan needs to be updated in order to better reflect the current social, ecological and economic conditions of Yaquina Bay.

As a result, and in consultation with an Advisory Group, Technical Sub-Group, and Steering Committee, the following changes have been proposed:

- Use digital maps to replace hand-drawn maps
- Create standardized Estuary Zoning Districts to replace Permitted Use Matrix
- Update certain Management Units by splitting units or shifting boundaries to better reflect natural areas for protection and areas for development
- Consider and incorporate local climate vulnerabilities when planning projects that could impact the estuary

Por favor [presiona aqui](#) para leer esta pagina en español.

DRAFT EMP

Download the draft updated Estuary Management Plan for Yaquina Bay.

[Download the Draft Plan](#)

Background & Timelines

Context

Estuary Management Plans (EMPs) are required by Oregon Planning *Goal 16: Estuarine Resources*

EMPs are adopted by counties into Comprehensive Plans to manage the uses and activities of estuaries

Oregon's EMPs are 40+ years

DLCD wants to support EMP updating for all coastal communities

Yaquina Bay: pilot to develop an efficient and effective approach to updating a multi-jurisdictional plan

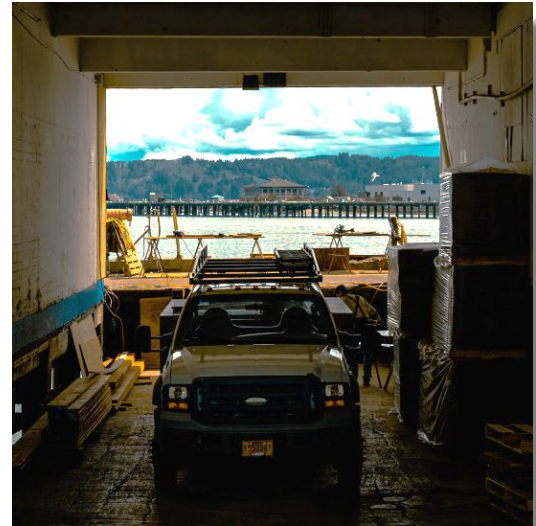
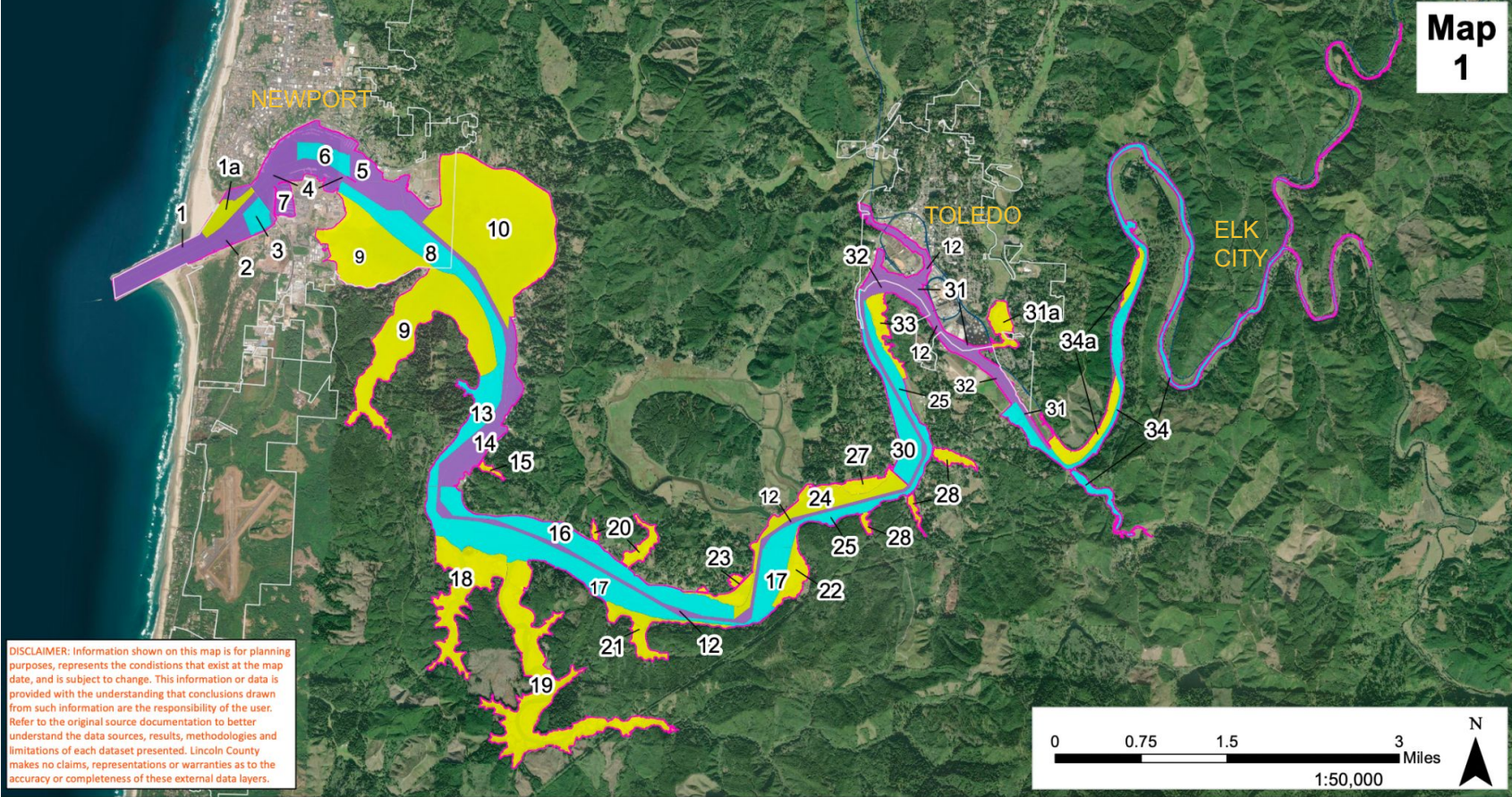


Photo credit: J Robinson



DISCLAIMER: Information shown on this map is for planning purposes, represents the conditions that exist at the map date, and is subject to change. This information or data is provided with the understanding that conclusions drawn from such information are the responsibility of the user. Refer to the original source documentation to better understand the data sources, results, methodologies and limitations of each dataset presented. Lincoln County makes no claims, representations or warranties as to the accuracy or completeness of these external data layers.

Estuary Management Unit Classifications

This map is a draft interim product of the Yaquina Bay Estuary Management Plan Update process intended to inform decision-making. This map is not the finalized product.

Legend

- Natural Units
- Conservation Units
- Development Units
- Estuary Boundary
- City Limits
- Railroad

How Estuary Management Plans Work

- EMPs regulate all estuarine/tidally influenced waters extending up to head of tide or the line of non-aquatic vegetation
- Regulatory area (extent) is segmented into Management Units
- Each Management Unit is classified as **Natural, Conservation, or Development**
- Classifications determine what uses or activities are *Permissible, Conditional, or Not Allowed*

Proposed alterations that would disturb submerged estuary areas require:

- Impact Assessments (informational in nature)
- Compensatory mitigation (required for any dredge/fill of intertidal areas)



Photo credit: NOAA

Timeline

Project Launch: May 2021

Steering Committee assembled
Consultant hired

Data Gathering /Needs Assessment: June 2021-June 2022

Advisory Group assembled
Inventories developed

Technical Update: 2022-Mar 2023

Update Plan language
Technical subgroup assembled
Incorporate climate change

July

Stakeholder Engagement: April- July 2023

Open House
Public release of draft EMP
Town Halls

Updated Final Draft EMP: August 2023

Consultant contract ends

Formal review & adoption process

~Winter 2024

Who was involved

Project Team



MATT SPANGLER
Lincoln County
(Consultant)

Process: Steering Committee

Onno Husing	Lincoln County
Megan Hoff	Lincoln County
Derrick Tokos	City of Newport
Judy Richter	City of Toledo
Stan Van De Wetering	Confederated Tribes of Siletz Indians
Andrea Sumerau	Confederated Tribes of Siletz Indians
Paula Miranda	Port of Newport
Aaron Bretz	Port of Newport
Debbie Scacco	Port of Toledo
Lisa Phipps	OR Department of Land Conservation & Development
Meg Reed	OR Department of Land Conservation & Development
Brett Estes	OR Department of Land Conservation & Development

Key Roles:

- Inform & review spatial data and maps
- Review & approve of types of changes needed
- Review & approve of Draft Plan & Inventories for public release

Process: Advisory Group

Jerry Anderson	Manulife Investment Management
Cheryl Brown	US Environmental Protection Agency
Jevra Brown	Oregon Department of State Lands
Bob Cowen	Hatfield Marine Science Center
Tony D'Andrea	Oregon Department of Fish & Wildlife
Kent Doughty	Audubon Society of Lincoln City
Paul Engelmeyer	Wetlands Conservancy/Audubon Society
Jon Gonzalez	Pacific Seafood
Bri Goodwin	Surfrider
Claire Hall	Lincoln County Commissioner
Evan Hayduk	MidCoast Watersheds Council
Megan Hoff	Lincoln County
Cheryl Horton	Midcoast Watershed Council
Onno Husing	Lincoln County
Cameron La Follette	Oregon Coast Alliance
Phillip Johnson	Oregon Shores Conservation
Betty Kamikawa	City of Toledo Councilor
Chris Knutsen	Oregon Department of Fish & Wildlife
Heather Mann	Midwater Trawlers
Jared Norton	US Army Corps of Engineers
Jason Nuckols	The Nature Conservancy

Key Roles of Advisory Group & Technical Sub-Group

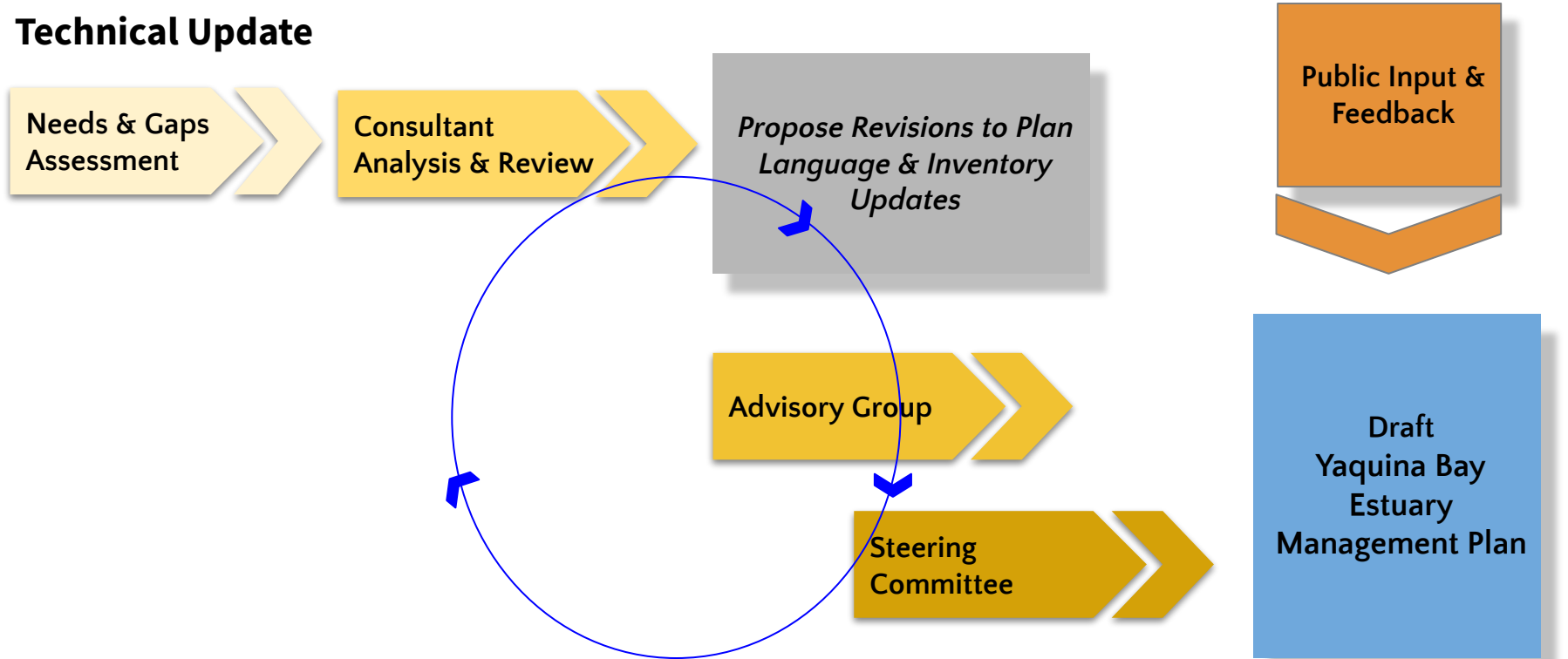
- Inform & review spatial data and maps
- Inform & review climate change information & Climate Vulnerabilities
- Provide guidance on community outreach
- Review & provide feedback on Plan drafts & maps

Ryan Parker	City of Newport Councilor
Catherine de Rivera	Portland State University
Liz Ruther	Pew Charitable Trusts
Natalie Schaefer	Yakona Preserve & Learning Center
Andrea Sumerau	Confederated Tribes of Siletz Indians
Gil Sylvia	Port of Newport
Stan Van De Wetering	Confederated Tribes of Siletz Indians
Ted DeWitt	US Environmental Protection Agency
George Waldbusser	Oregon State University
Cora Warfield	City of Toledo Councilor
Stephen Webster	Websters
Derek Wilson	Oregon Department of Fish & Wildlife
Liu Xin	Local Oyster Farmer
Michele Zwartjes	US Fish and Wildlife Service

Update process

Process

Technical Update



Stakeholder Engagement

- *Informational Website
- Community Conversations
- *April 2023 - Open House
- *Town Halls
 - Newport - July 6th
 - Toledo - July 10th
 - Virtual - July 11th
- Public comment period closes **July 14th**



*Spanish language translated information & handouts

EMP Sideboards

May Change

- Remove Plan Parts that are no longer necessary
- Edit Management Unit narratives
- Edit Management Unit boundaries
- Split or add new Management Units
- Identify new restoration sites
- Include additional information for Impact Assessments

Unlikely to Change

- Changing classification of heavy industry Management Units
- Changing classification of Natural Management Units w/ important habitats

EMP Sideboards

Not Possible, Requires a Goal Exception, or Goal Change

- Changing list of prescribed activities (Permitted, Conditional, Not Allowed)
- Changing classification in Management Units w/ navigation channels
- Changing classification in Management Units w/ active Ports or Marinas
- **Managing land uses outside of the estuary**
- **Adding more regulations**

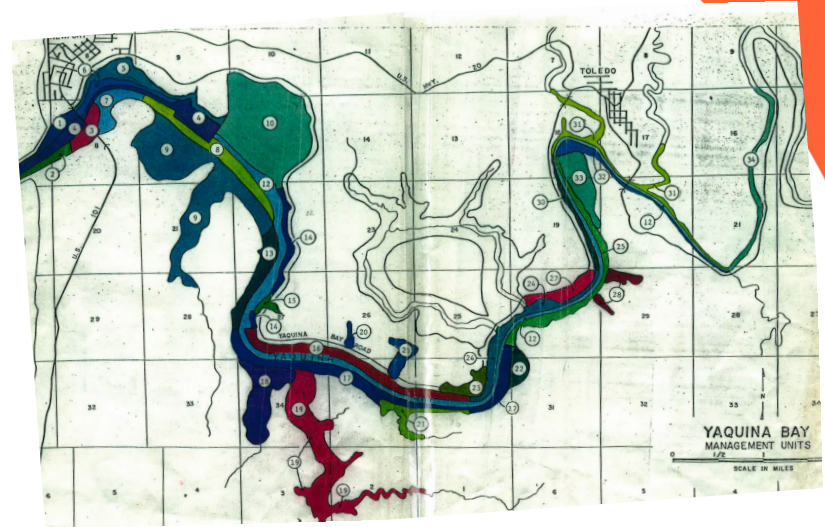
Update Needs for Yaquina Bay (Assessment)

Modernization Objectives

1. Update
2. Improve usability and/or accessibility of Plan
3. Improve Plan implementation
4. Further Goal 16 or local policy objectives

Update relevant data and digitize maps

Include impacts of climate change in Plan implementation



Plan Drafting Process

1. **Project Team** drafted revisions to plan parts
2. **Advisory Group** reviewed plan parts & provided feedback
3. **Project Team** tracked, reviewed, and responded to feedback
4. **Steering Committee** decided on final response to feedback
5. Plan Drafts ready for **public review** & shared with public for feedback

We Are Here

6. Project Team will track, review, and respond to public feedback
7. Plan draft will be finalized and submitted to jurisdictions

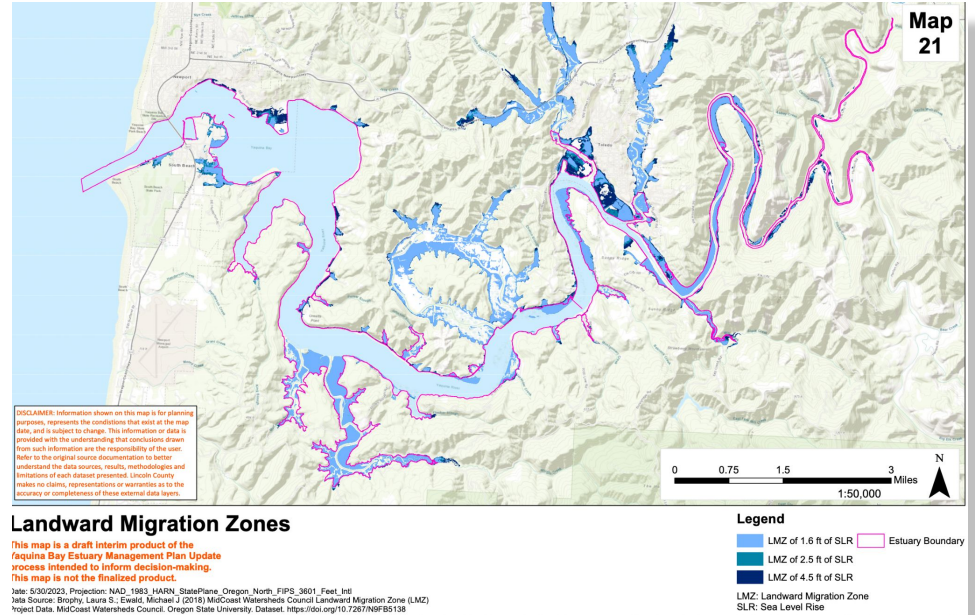
Proposed revisions

Proposed EMP Revisions

Component	YBEMP Update
Maps	Digital maps to replace hand-drawn maps
Language	Remove outdated references
Implementation Approach	Estuary Zoning Districts to replace Permitted Use Matrix
Update Certain Management Units	Splitting units, shifting boundaries, and reclassifying units to better reflect areas for protection and development
Climate change	Consider and incorporate local climate vulnerabilities
Adaptive Management	Support future Plan updates when conditions change
Restoration Sites	Compile larger list from past planning initiatives

Updated Inventories & Maps

- Head of Tide
- Ownership
- Fish Species
- Estuary Tidal Wetlands
- National Wetland Inventory
- Dredged Material Sites
- Aquatic
- Biotic
- Substrate
- Tsunami
- Soft Sediment Fauna
- Historic Vegetation



- Restoration Sites
- Coastal Habitat
- Flood Zones
- Sea Level Rise
- Landward Migration Zones

Climate Vulnerabilities

- Specific Climate Vulnerabilities for each Sub-Area
- Must be considered when performing an Impact Assessment

Impact Assessment

- Required for breaking ground inside of estuary
- Informational in nature
- What, where, potential impact to habitat, **potential interactions with climate vulnerabilities**, plans to avoid or minimize those impacts

Future Revisions

To be led by the County and/or Cities of Newport & Toledo:

- Update Plan Part V - Estuarine Use Standards
- Update Plan Part IX - Future Development Sites

To be led by DLCD

- Develop guidance on how to incorporate climate change into EMPs

Outcomes for Yaquina Bay Community

- Better information, data, and maps that are more easily accessible for those who work on and care about the estuary
- Better understanding of what uses and alterations are permissible, conditional, and not allowed across the estuary
- Climate vulnerabilities relevant to specific areas of Yaquina Bay to be taken into account by those seeking to alter the estuary



Photo credit: J Robinson

EMP Guidance for Coastal Communities

Written for both communities with low capacity/resource-stretched
AND those that have grant funds and external capacity

- Based on lessons learned
- Process-oriented
- Provide templates (e.g.: work plans) when applicable and useful

**Thank you for your
participation!**

www.yaquina-emp.org

Meg.REED@dlcd.oregon.gov

Lisa.PHIPPS@dlcd.oregon.gov

ethan@willamettepartnership.org

maness@willamettepartnership.org

mrhoward@uoregon.edu

ohusing@co.lincoln.or.us

mhoff@co.lincoln.or.us

