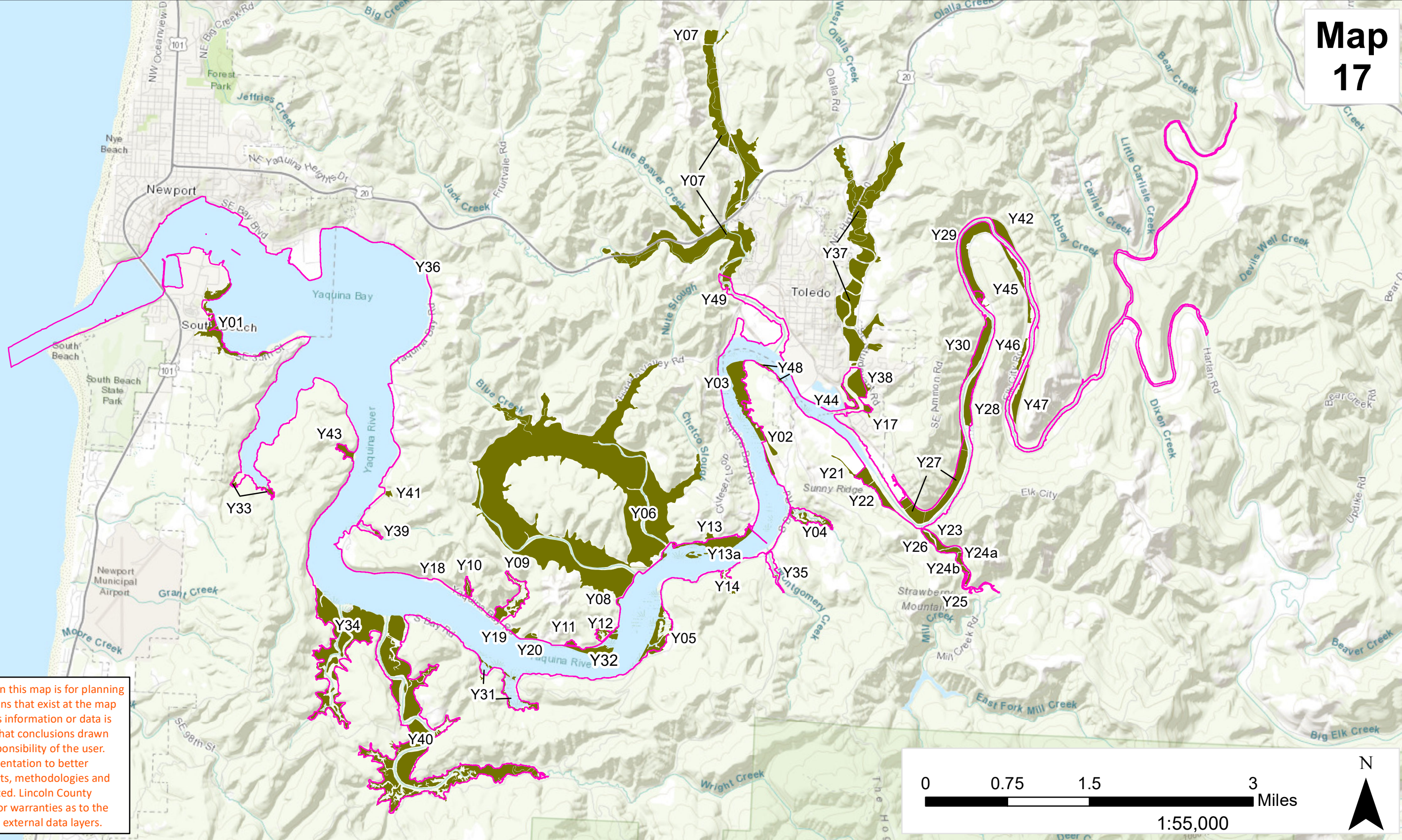


DISCLAIMER: Information shown on this map is for planning purposes, represents the conditions that exist at the map date, and is subject to change. This information or data is provided with the understanding that conclusions drawn from such information are the responsibility of the user. Refer to the original source documentation to better understand the data sources, results, methodologies and limitations of each dataset presented. Lincoln County makes no claims, representations or warranties as to the accuracy or completeness of these external data layers.



This map is a draft interim product of the Yaquina Bay Estuary Management Plan Update process intended to inform decision-making. This map is not the finalized product.

Legend
 Restoration Sites
 Estuary Boundary

Restoration Sites

See reports cited below for descriptions of each restoration site.

Date: 5/30/2023, Projection: NAD_1983_HARN_StatePlane_Oregon_North_FIPS_3601_Feet_Intl
Data Source: Brophy, L.S. 2012. Tidal Wetlands of the Yaquina and Alsea River Estuaries, Oregon: Geographic Information Systems Layer Development and Recommendations for National Wetlands Inventory Revisions. USGS Open-File Report 2012-1038. U.S. Dept. of the Interior, U.S. Geological Survey.
<https://pubs.usgs.gov/of/2012/1038/methods.html>

Data Source: Brophy, L.S. 1999. Final report—Yaquina and Alsea River Basins estuarine wetland site prioritization project: Report prepared for the MidCoast Watersheds Council, Newport, Oregon, Green Point Consulting, Corvallis, Oregon, 50 p.
<https://doi.org/10.13140/RG.2.2.26654.20803>

Data Source: Brophy L.S., Greene C.M., Hare V.C., Holycross B., Lanier A., Heady W.N., O'Connor K., Imaki H., Haddad T., and Dana R. 2019. Insights into estuary habitat loss in the western United States using a new method for mapping maximum extent of tidal wetlands. PLOS ONE 14(8): e0218558.
<https://doi.org/10.1371/journal.pone.0218558>.